

OTC 3109

SW ID 4346 Update Instructions

Date of Release: August 2, 2010

New Software Version: 4346

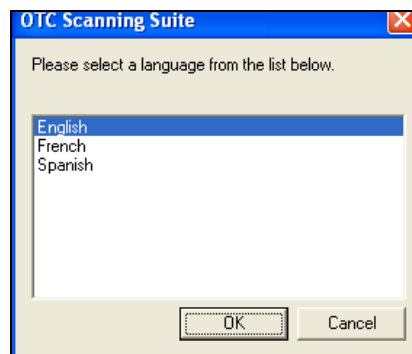
Previous Software Version: 5109

Verify Tool Software Version

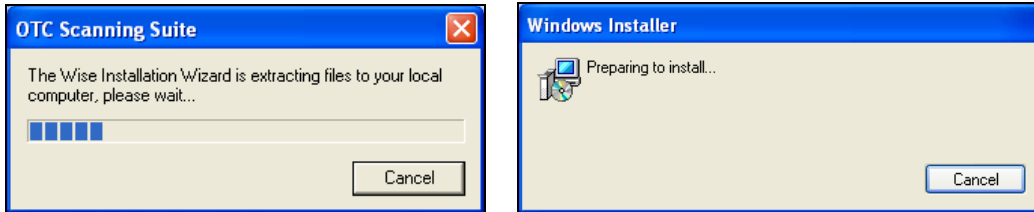
1. Connect the tool to an OBD II vehicle and turn the key to the ON position.
2. The tool will automatically display the I/M Monitors and Codes. Press the ←**BACK** button to return to the Main Menu.
3. Tap the ▼**ERASE** button until System Setup is highlighted and press **ENTER**.
4. Tap the ▼**ERASE** button until Tool Information is highlighted and press **ENTER**.
5. View the SW ID. If it is 5109 then continue this update.

Install Scanning Suite

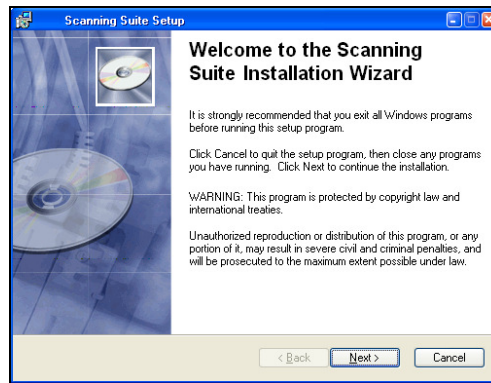
1. To install Scanning Suite, first locate the Scanning Suite CD which was included in your kit. Insert the CD into the CD or DVD drive on your computer. If the CD does not run automatically, open My Computer, then open the CD and double click **Setup.exe**.
2. Select the desired language and click **OK**.



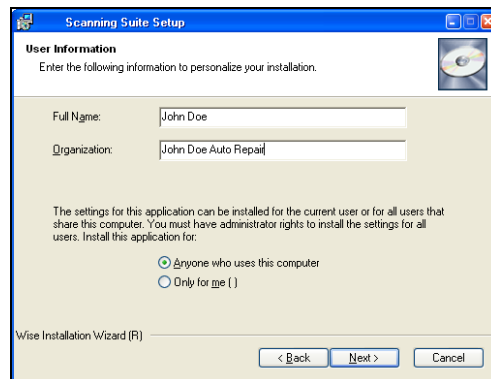
3. Wait while the files are extracted and prepared to install.



4. Close any open windows and click **Next**.

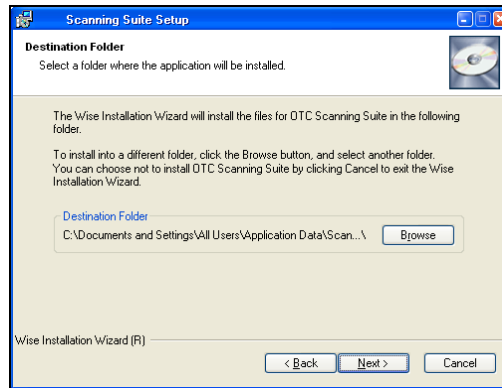


5. Enter your information and choose which users you wish to allow to access this program. Then click **Next**.

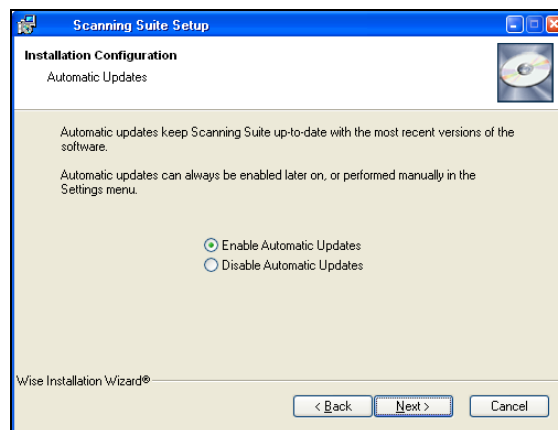


6. The Scanning Suite application will install the files in a default location. Click **Next** to continue.

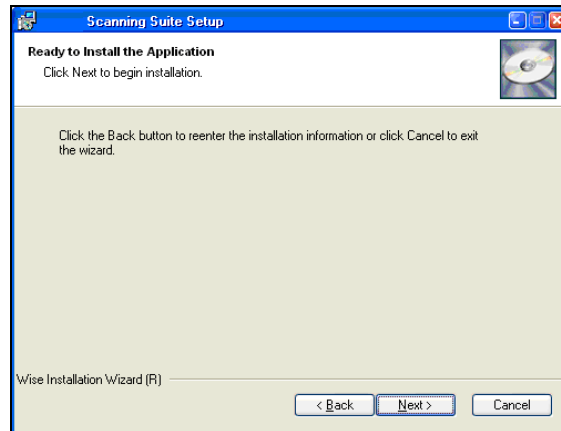
If you prefer to install the files in another location, click **Browse** to choose another destination folder and click **Next**.



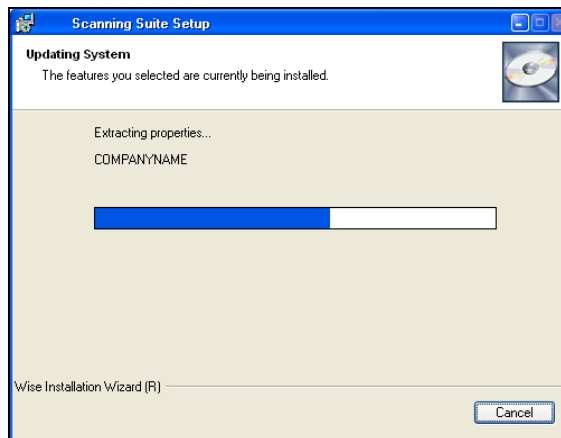
7. Select if you would like to **Enable** or **Disable** Automatic Updates and click **Next**. If enabled, Scanning Suite will automatically check for updates. This feature can be easily modified in the Setup Menu after Scanning Suite is installed.



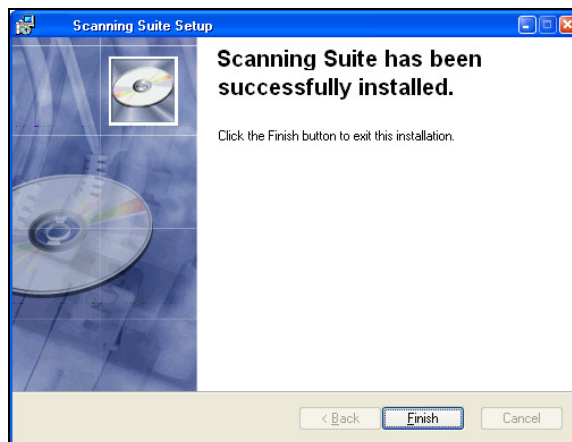
8. Click **Next** to install Scanning Suite.



9. The installation will begin.



10. When the installation is complete, click **Finish** to exit.

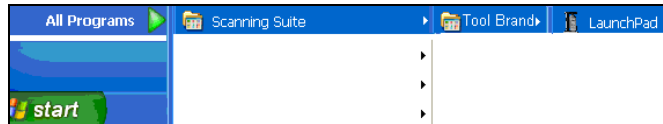


Update the Tool

1. Double click the **Scanning Suite Launchpad** icon on your desktop to open Scanning Suite. If you do not have the icon on your desktop, you can find it by going to **Start Menu/All Programs/Scanning Suite/"Tool Brand"**.



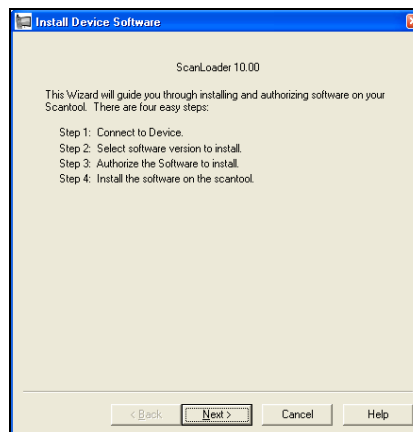
Or



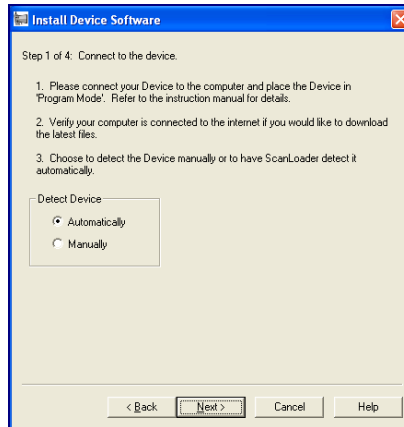
2. Click **Tool Update**.



3. The ScanLoader application will open. Click **Next** to continue.



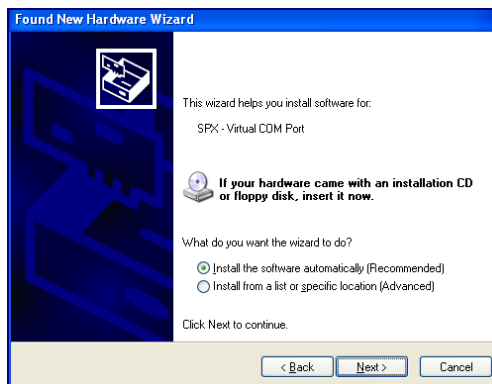
4. Connect your tool to the PC using the USB cable. The tool will power on and display “PROGRAM MODE See User Manual”.



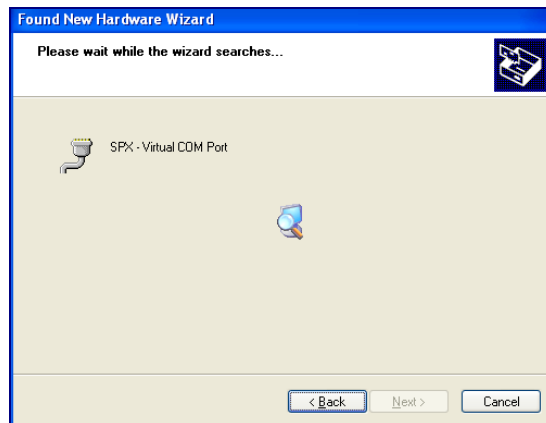
5. Windows may open the “Found New Hardware Wizard” to install the USB drivers. Check the **Yes, this time only** option and click **Next**. If the Hardware Wizard does not open, skip to **Step 14**.



6. Check the **Install the software automatically** option and click **Next**.



7. The Wizard will begin searching for the drivers.



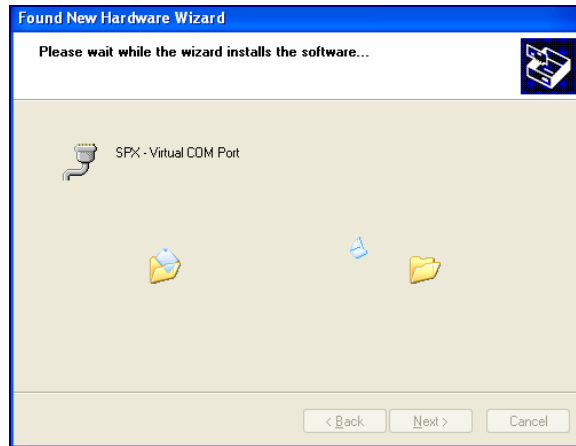
11. If you see a message similar to the ones below, click **Continue Anyway** or **Install this driver software anyway**.



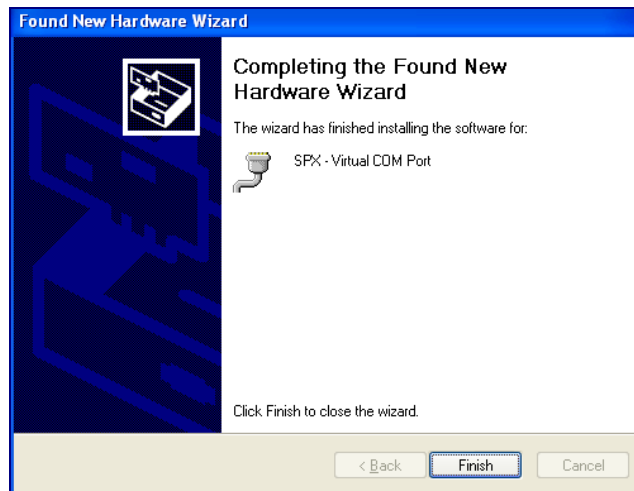
Vista: The Device Drive Wizard may appear behind other windows. If this occurs, it must be brought to the front by clicking the button on the task bar (see below).



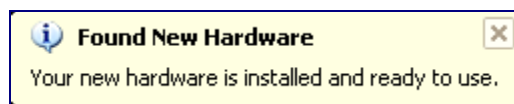
12. The Wizard will install the software.



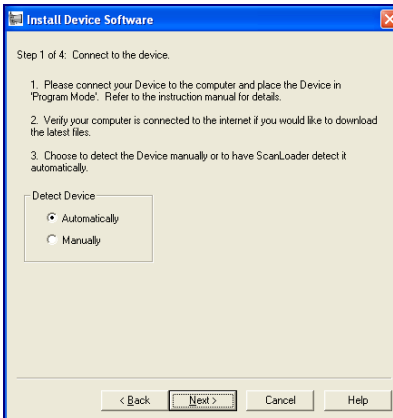
13. Once the drivers are installed, click **Finish** to exit the Device Driver Installation Wizard.



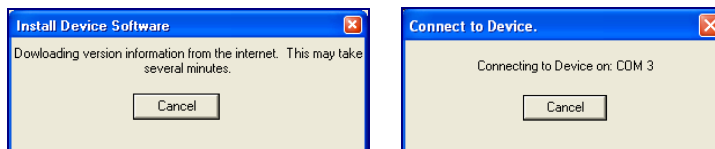
The drivers are now installed and the tool is ready to be updated



14. Verify that your computer is connected to the internet. Check the option for Scanning Suite to **Automatically** connect to the device and click **Next**.

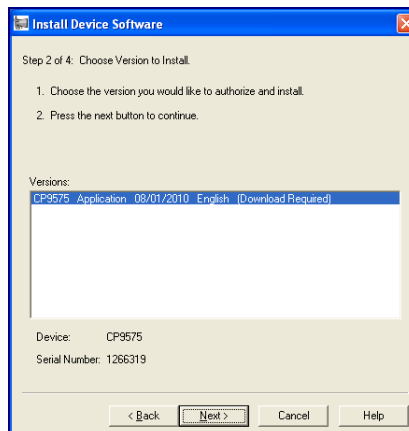


15. Scanning Suite will download version information from our server and begin searching virtual COM ports for the device.

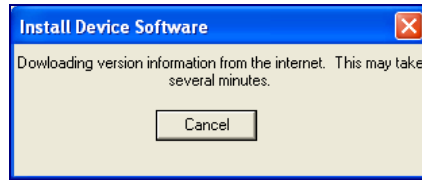


Note: If Scanning Suite cannot find the device, you will see a “could not connect to the device” message. If this occurs, try using a different USB port or check Windows Device Manger to ensure the drivers are properly installed and a virtual COM port was created for the tool.

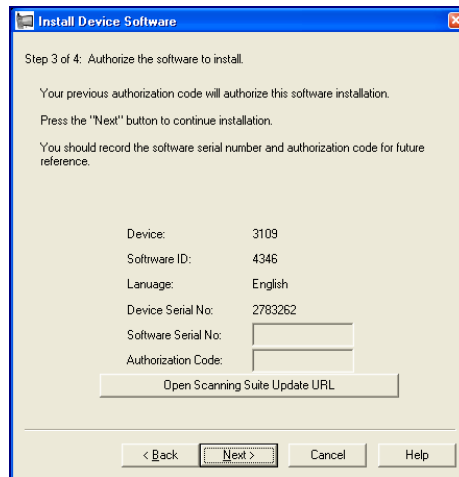
16. Once Scanning Suite is connected to the device, a version list will be displayed. Choose the most recent version and click **Next**. If the tool already has the most current software version installed, the list will be blank. In this case, simply cancel the update.



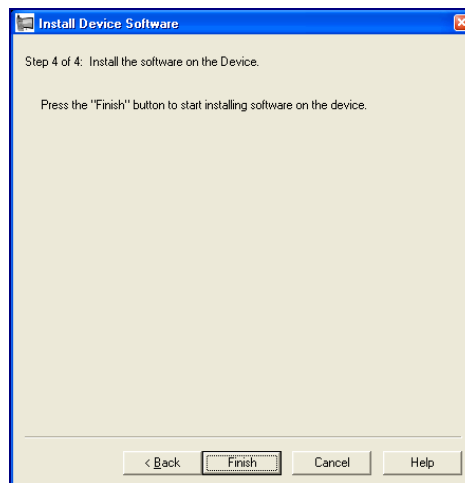
17. Scanning Suite will download the files from our update server. This may take several minutes.



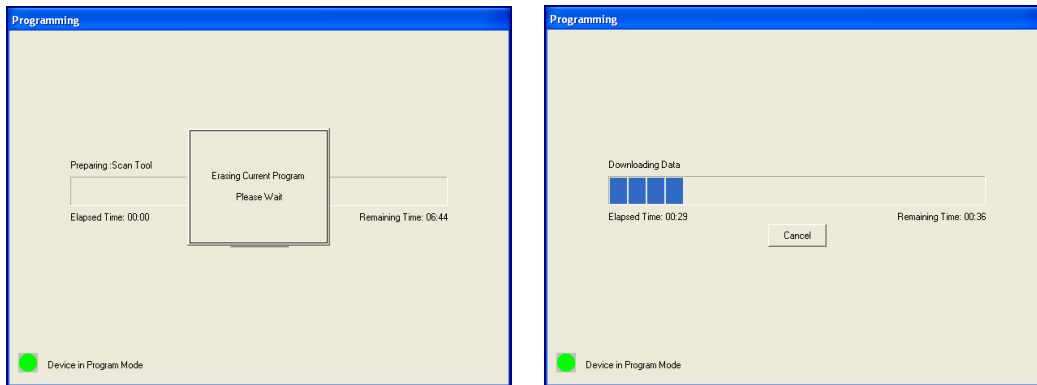
18. Once the files are downloaded, you will need to authorize the software. Since this is a free update, the software serial number and authorization code is not required. Click **Next** to install the new software onto the tool.



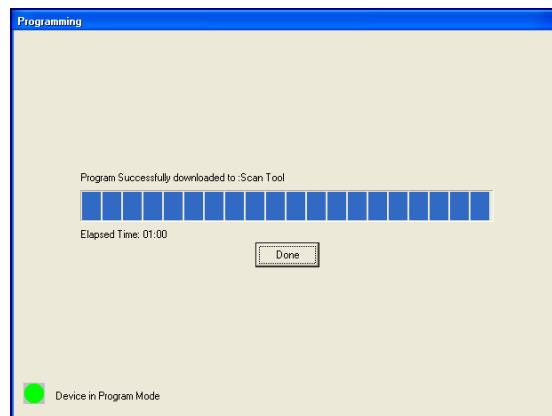
19. Click **Finish** to begin the installation.



20. The old program will be erased and the new program will be installed.



21. The update will normally take about one minute. Click **Done** once completed.



22. The update is complete and the tool will display Success. You may now disconnect the tool and close the Scanning Suite application.